

CD1D Polyclonal Antibody

Catalog Number:E-AB-52320



Note: Centrifuge before opening to ensure complete recovery of vial contents.

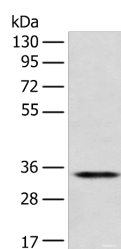
Description

Reactivity	Human
Immunogen	Fusion protein of human CD1D
Host	Rabbit
Isotype	IgG
Purification	Antigen affinity purification
Conjugation	Unconjugated
Formulation	PBS with 0.05% NaN ₃ and 40% Glycerol,pH7.4

Applications Recommended Dilution

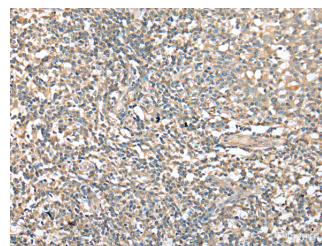
WB	1:500-1:2000
IHC	1:25-1:100
ELISA	1:5000-1:10000

Data



Western blot analysis of Jurkat cell using CD1D Polyclonal Antibody at dilution of 1:300

Observed Mw:Refer to figures
Calculated Mw:38 kDa



Immunohistochemistry of paraffin-embedded Human tonsil tissue using CD1D Polyclonal Antibody at dilution of 1:25(×200)

Preparation & Storage

Storage Store at -20°C. Avoid freeze / thaw cycles.

Background

CD1d is a member of the CD1 family of transmembrane glycoproteins, which are structurally related to the major histocompatibility complex (MHC) proteins and form heterodimers with beta-2-microglobulin. CD1d is an antigen-presenting protein that binds self and non-self glycolipids and presents them to T-cell receptors on NKT cells. When activated, NKT cells rapidly produce Th1 and Th2 cytokines. The molecular weight of unglycosylated CD1d is 38 kDa, while glycosylated form of CD1d is 48-55 kDa.

For Research Use Only

A Reliable Research Partner in Life Science and Medicine

Toll-free: 1-888-852-8623

Web: www.elabscience.com

Tel: 1-832-243-6086

Email: techsupport@elabscience.com

Fax: 1-832-243-6017