

CSNK1A1 Polyclonal Antibody

Catalog No. E-AB-30747

Note: Centrifuge before opening to ensure complete recovery of vial contents.

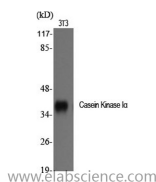
Description

Reactivity	Human,Mouse,Rat
Immunogen	Synthesized peptide derived from human Casein Kinase I α around the non-phosphorylation site of Y321.
Host	Rabbit
Isotype	IgG
Purification	Affinity purification
Buffer	PBS with 0.02% sodium azide,0.5% protective protein and 50% glycerol pH 7.4.

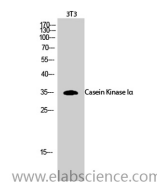
Applications Recommended Dilution

WB	1:500-1:2000
IHC	1:100-1:300
IF	1:200-1:1000
ELISA	1:5000

Data



Western Blot analysis of 3T3 cells with CSNK1A1 Polyclonal Antibody
Observed Mw:35kDa
Calculated Mw:39kDa



Western Blot analysis of 3T3 cells with CSNK1A1 Polyclonal Antibody

Preparation & Storage

Storage Store at -20°C. Avoid freeze / thaw cycles.

Background

Casein kinases are operationally defined by their preferential utilization of acidic proteins such as caseins as substrates. It can phosphorylate a large number of proteins. Participates in Wnt signaling. Phosphorylates CTNNB1 at 'Ser-45'. May play a role in segregating chromosomes during mitosis.

For Research Use Only