

## ZNF672 Polyclonal Antibody

Catalog No. E-AB-52339

**Note:** Centrifuge before opening to ensure complete recovery of vial contents.

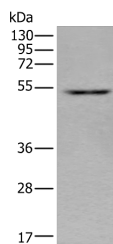
### Description

<b>Reactivity</b>	Human
<b>Immunogen</b>	Full length fusion protein
<b>Host</b>	Rabbit
<b>Isotype</b>	IgG
<b>Purification</b>	Antigen affinity purification
<b>Conjugation</b>	Unconjugated
<b>Buffer</b>	PBS with 0.05% NaN <sub>3</sub> and 40% Glycerol,pH7.4

### Applications Recommended Dilution

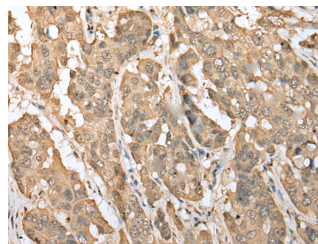
<b>WB</b>	1:500-1:2000
<b>IHC</b>	1:25-1:100

### Data



Western blot analysis of HEPG2 cell lysate using ZNF672 Polyclonal Antibody at dilution of 1:350

**Observed Mw:Refer to figures**  
**Calculated Mw:50 kDa**



Immunohistochemistry of paraffin-embedded Human breast cancer tissue using ZNF672 Polyclonal Antibody at dilution of 1:30(×200)

### Preparation & Storage

**Storage** Store at -20°C. Avoid freeze / thaw cycles.

### Background

ZNF672 (zinc finger protein 672) is a 452 amino acid nuclear protein that may be involved in transcriptional regulation. Belonging to the Krüppel C2H2-type zinc-finger protein family, ZNF672 contains 14 C2H2-type zinc fingers. ZNF672 exists as two alternatively spliced isoforms, and is encoded by a gene that maps to human chromosome 1q44. Human chromosome 1 spans 260 million base pairs, contains over 3,000 genes, comprises nearly 8% of the human genome, and houses a large number of disease-associated genes, including those that are involved in familial adenomatous polyposis, Stickler syndrome, Parkinson's disease, Gaucher disease, schizophrenia and Usher syndrome.

### For Research Use Only