

## LYPLA1 Polyclonal Antibody

**Catalog No.** E-AB-52346

*Note:* Centrifuge before opening to ensure complete recovery of vial contents.

### Description

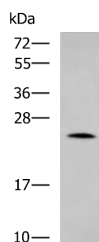
<b>Reactivity</b>	Human, Mouse, Rat
<b>Immunogen</b>	Fusion protein of human LYPLA1
<b>Host</b>	Rabbit
<b>Isotype</b>	IgG
<b>Purification</b>	Antigen affinity purification
<b>Conjugation</b>	Unconjugated
<b>Buffer</b>	PBS with 0.05% NaN <sub>3</sub> and 40% Glycerol,pH7.4

### Applications

### Recommended Dilution

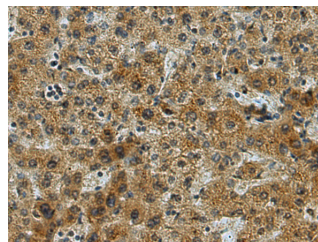
**WB 1:500-1:2000,**  
**IHC 1:100-1:300,**  
**ELISA**  
**1:5000-1:10000**

### Data

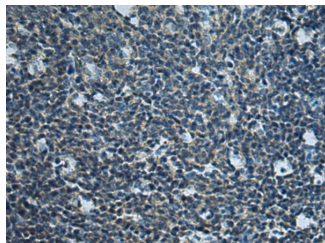


Western blot analysis of Mouse small intestines tissue lysate using LYPLA1 Polyclonal Antibody at dilution of 1:1000

**Observed Mw:Refer to figures**  
**Calculated Mw:25 kDa**



Immunohistochemistry of paraffin-embedded Human liver cancer tissue using LYPLA1 Polyclonal Antibody at dilution of 1:80(×200)



Immunohistochemistry of paraffin-embedded Human tonsil tissue using LYPLA1 Polyclonal Antibody at dilution of 1:80(×200)

### For Research Use Only

## Preparation & Storage

**Storage**                      Store at -20°C. Avoid freeze / thaw cycles.

## Background

This gene encodes a member of the alpha/beta hydrolase superfamily. The encoded protein functions as a homodimer, exhibiting both depalmitoylating as well as lysophospholipase activity, and may be involved in Ras localization and signaling. Alternate splicing results in multiple transcript variants. Pseudogenes of this gene have been defined on chromosomes 4, 6, and 7.

---

## For Research Use Only