

## CSNK1D Polyclonal Antibody

**Catalog No.** E-AB-30750

*Note:* Centrifuge before opening to ensure complete recovery of vial contents.

### Description

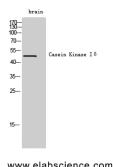
<b>Reactivity</b>	Human, Mouse, Rat
<b>Immunogen</b>	Synthesized peptide derived from the Internal region of human Casein Kinase Iδ
<b>Host</b>	Rabbit
<b>Isotype</b>	IgG
<b>Purification</b>	Affinity purification
<b>Conjugation</b>	Unconjugated
<b>Buffer</b>	PBS with 0.02% sodium azide, 0.5% protective protein and 50% glycerol, pH7.4

### Applications

### Recommended Dilution

<b>WB</b>	1:500-1:2000
<b>ELISA</b>	1:40000

### Data



Western Blot analysis of brain cells with CSNK1D  
Polyclonal Antibody  
**Observed Mw:47kDa**  
**Calculated Mw:47kDa**

### Preparation & Storage

**Storage** Store at -20°C. Avoid freeze / thaw cycles.

### Background

Casein kinases are operationally defined by their preferential utilization of acidic proteins such as caseins as substrates. It can phosphorylate a large number of proteins. Participates in Wnt signaling. Central component of the circadian clock. May act as a negative regulator of circadian rhythmicity by phosphorylating PER1 and PER2. Retains PER1 in the cytoplasm.

### For Research Use Only