

CSNK1E Polyclonal Antibody

Catalog No. E-AB-30751

Note: Centrifuge before opening to ensure complete recovery of vial contents.

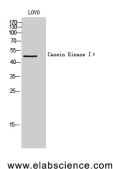
Description

Reactivity	Human, Mouse
Immunogen	Synthesized peptide derived from the Internal region of human Casein Kinase Iε
Host	Rabbit
Isotype	IgG
Purification	Affinity purification
Conjugation	Unconjugated
Buffer	PBS with 0.02% sodium azide, 0.5% protective protein and 50% glycerol, pH7.4

Applications Recommended Dilution

WB	1:500-1:2000
IHC	1:100-1:300
IF	1:200-1:1000
ELISA	1:20000

Data



Western Blot analysis of LOVO cells with CSNK1E
Polyclonal Antibody
Observed Mw:47kDa
Calculated Mw:47kDa

Preparation & Storage

Storage Store at -20°C. Avoid freeze / thaw cycles.

Background

Casein kinases are operationally defined by their preferential utilization of acidic proteins such as caseins as substrates. Can phosphorylate a large number of proteins. Participates in Wnt signaling. Phosphorylates DVL1. Central component of the circadian clock. May act as a negative regulator of circadian rhythmicity by phosphorylating PER1 and PER2. Retains PER1 in the cytoplasm. Inhibits cytokine-induced granulocytic differentiation.

For Research Use Only