

CASP1 Polyclonal Antibody

Catalog No. E-AB-30752

Note: Centrifuge before opening to ensure complete recovery of vial contents.

Description

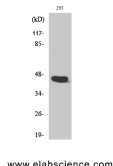
Reactivity	Human,Mouse,Rat
Immunogen	Synthesized peptide derived from human Caspase-1 around the non-phosphorylation site of Ser376.
Host	Rabbit
Isotype	IgG
Purification	Affinity purification
Conjugation	Unconjugated
Buffer	PBS with 0.02% sodium azide, 0.5% BSA and 50% glycerol, pH7.4

Applications

Recommended Dilution

WB 1:500-1:2000,
IHC 1:100-1:300,
ELISA 1:20000

Data



Western Blot analysis of 293 cells using CASP1
Polyclonal Antibody at dilution of 1:500.

Observed Mw:29kDa
Calculated Mw:29kDa

Preparation & Storage

Storage Store at -20°C. Avoid freeze / thaw cycles.

Background

Thiol protease that cleaves IL-1 beta between an Asp and an Ala, releasing the mature cytokine which is involved in a variety of inflammatory processes. Important for defense against pathogens. Cleaves and activates sterol regulatory element binding proteins (SREBPs). Can also promote apoptosis.

For Research Use Only