

CASP12 Polyclonal Antibody

Catalog No. E-AB-30754

Note: Centrifuge before opening to ensure complete recovery of vial contents.

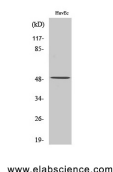
Description

Reactivity	Human
Immunogen	Synthesized peptide derived from the Internal region of human Caspase12.
Host	Rabbit
Isotype	IgG
Purification	Affinity purification
Conjugation	Unconjugated
Buffer	PBS with 0.02% sodium azide, 0.5% protective protein and 50% glycerol, pH7.4

Applications Recommended Dilution

WB	1:500-1:2000
IHC	1:100-1:300
ELISA	1:40000

Data



Western Blot analysis of HuvEc cells using CASP12
Polyclonal Antibody at dilution of 1:500.
Observed Mw:50kDa
Calculated Mw:29-38kDa

Preparation & Storage

Storage Store at -20°C. Avoid freeze / thaw cycles.

Background

Has no protease activity. May reduce cytokine release in response to bacterial lipopolysaccharide during infections. Reduces activation of NF-kappa-B in response to TNF.

For Research Use Only