

## CD14 Polyclonal Antibody

**Catalog No.** E-AB-52404

*Note:* Centrifuge before opening to ensure complete recovery of vial contents.

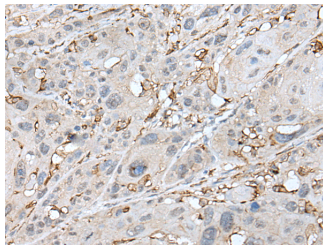
### Description

<b>Reactivity</b>	Human
<b>Immunogen</b>	Fusion protein of human CD14
<b>Host</b>	Rabbit
<b>Isotype</b>	IgG
<b>Purification</b>	Antigen affinity purification
<b>Conjugation</b>	Unconjugated
<b>Buffer</b>	PBS with 0.05% NaN <sub>3</sub> and 40% Glycerol,pH7.4

### Applications Recommended Dilution

<b>IHC</b>	1:30-1:150
------------	------------

### Data



Immunohistochemistry of paraffin-embedded Human esophagus cancer tissue using CD14 Polyclonal Antibody at dilution of 1:40(×200)

### Preparation & Storage

**Storage** Store at -20°C. Avoid freeze / thaw cycles.

### Background

CD14 is a 50-55 kDa glycosylphosphatidylinositol-anchored glycoprotein. CD14 is preferentially expressed on monocytes and macrophages. CD14 acts as a co-receptor (along with TLR4 and MD-2) for bacterial liposaccharides (LPS). It plays a major role in the inflammatory response of monocytes to LPS.

### For Research Use Only