

VTI1B Polyclonal Antibody

Catalog No. E-AB-52425

Note: Centrifuge before opening to ensure complete recovery of vial contents.

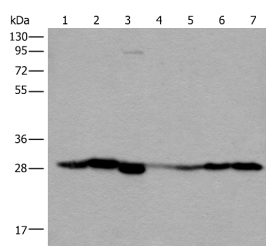
Description

Reactivity	Human, Mouse, Rat
Immunogen	Full length fusion protein
Host	Rabbit
Isotype	IgG
Purification	Antigen affinity purification
Conjugation	Unconjugated
Buffer	PBS with 0.05% NaN ₃ and 40% Glycerol, pH7.4

Applications Recommended Dilution

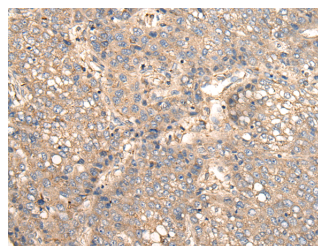
WB	1:500-1:2000
IHC	1:25-1:100

Data

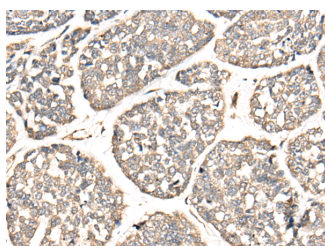


Western blot analysis of Human kidney tissue
RAW264.7 cell Mouse kidney tissue Human lung
tissue Human fetal liver tissue Hela and 231 cell
lysates using VTI1B Polyclonal Antibody at dilution
of 1:300

Observed Mw: Refer to figures
Calculated Mw: 27 kDa



Immunohistochemistry of paraffin-embedded
Human liver cancer tissue using VTI1B Polyclonal
Antibody at dilution of 1:30 (×200)



Immunohistochemistry of paraffin-embedded
Human esophagus cancer tissue using VTI1B
Polyclonal Antibody at dilution of 1:30 (×200)

For Research Use Only

Preparation & Storage

Storage Store at -20°C. Avoid freeze / thaw cycles.

Background

VTI1B (Vesicle Transport Through Interaction With T-SNAREs 1B) is a Protein Coding gene. Diseases associated with VTI1B include Hypomyelinating Leukodystrophy. Among its related pathways are wtCFTR and deltaF508 traffic / Late endosome and Lysosome (norm and CF) and Response to elevated platelet cytosolic Ca2+. Gene Ontology (GO) annotations related to this gene include SNARE binding and chloride channel inhibitor activity. An important paralog of this gene is VTI1A.

For Research Use Only