

UBE2W Polyclonal Antibody

Catalog No. E-AB-52432

Note: Centrifuge before opening to ensure complete recovery of vial contents.

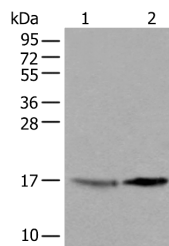
Description

| | |
|---------------------|---|
| Reactivity | Human, Mouse, Rat |
| Immunogen | Full length fusion protein |
| Host | Rabbit |
| Isotype | IgG |
| Purification | Antigen affinity purification |
| Conjugation | Unconjugated |
| Buffer | PBS with 0.05% NaN ₃ and 40% Glycerol, pH7.4 |

Applications Recommended Dilution

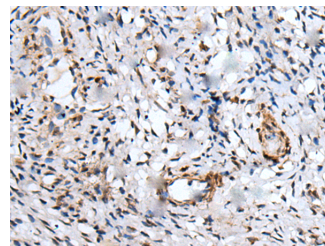
WB 1:500-1:2000,
IHC 1:40-1:250,
ELISA
1:5000-1:10000

Data

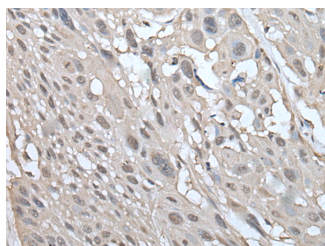


Western blot analysis of 231 cell and Human cerebrum tissue lysates using UBE2W Polyclonal Antibody at dilution of 1:550

Observed Mw: Refer to figures
Calculated Mw: 17 kDa



Immunohistochemistry of paraffin-embedded Human cervical cancer tissue using UBE2W Polyclonal Antibody at dilution of 1:55(×200)



Immunohistochemistry of paraffin-embedded Human esophagus cancer tissue using UBE2W Polyclonal Antibody at dilution of 1:55(×200)

For Research Use Only

Preparation & Storage

Storage Store at -20°C. Avoid freeze / thaw cycles.

Background

This gene encodes a nuclear-localized ubiquitin-conjugating enzyme (E2) that, along with ubiquitin-activating (E1) and ligating (E3) enzymes, coordinates the addition of a ubiquitin moiety to existing proteins. The encoded protein promotes the ubiquitination of Fanconi anemia complementation group proteins and may be important in the repair of DNA damage. There is a pseudogene for this gene on chromosome 1. Alternative splicing results in multiple transcript variants.

For Research Use Only