

## ATAD1 Polyclonal Antibody

**Catalog No.** E-AB-52454

*Note:* Centrifuge before opening to ensure complete recovery of vial contents.

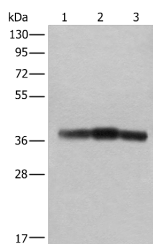
### Description

<b>Reactivity</b>	Human, Mouse, Rat
<b>Immunogen</b>	Fusion protein of human ATAD1
<b>Host</b>	Rabbit
<b>Isotype</b>	IgG
<b>Purification</b>	Antigen affinity purification
<b>Conjugation</b>	Unconjugated
<b>Buffer</b>	PBS with 0.05% NaN <sub>3</sub> and 40% Glycerol, pH7.4

### Applications Recommended Dilution

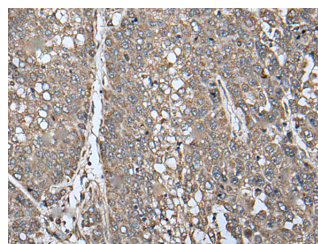
<b>WB</b>	1:500-1:2000
<b>IHC</b>	1:50-1:300

### Data

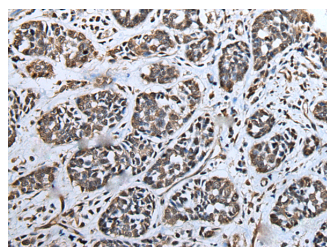


Western blot analysis of Rat brain tissue Mouse brain tissue and Human cerebrum tissue lysates using ATAD1 Polyclonal Antibody at dilution of 1:800

**Observed Mw: Refer to figures**  
**Calculated Mw: 41 kDa**



Immunohistochemistry of paraffin-embedded Human liver cancer tissue using ATAD1 Polyclonal Antibody at dilution of 1:65(×200)



Immunohistochemistry of paraffin-embedded Human esophagus cancer tissue using ATAD1 Polyclonal Antibody at dilution of 1:65(×200)

### Preparation & Storage

#### For Research Use Only

**Storage** Store at -20°C. Avoid freeze / thaw cycles.

## Background

ATAD1 (ATPase Family AAA Domain Containing 1) is a Protein Coding gene. Diseases associated with ATAD1 include Hyperekplexia 4 and Hyperekplexia. Gene Ontology (GO) annotations related to this gene include ATPase activity and microtubule-severing ATPase activity. An important paralog of this gene is SPAST.