

# ATP5C1 Polyclonal Antibody

Catalog Number:E-AB-52459



**Note:** Centrifuge before opening to ensure complete recovery of vial contents.

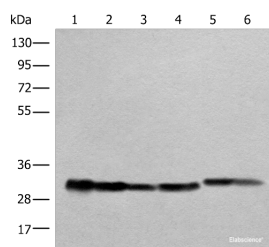
## Description

<b>Reactivity</b>	Human, Mouse, Rat
<b>Immunogen</b>	Fusion protein of human ATP5C1
<b>Host</b>	Rabbit
<b>Isotype</b>	IgG
<b>Purification</b>	Antigen affinity purification
<b>Conjugation</b>	Unconjugated
<b>Formulation</b>	PBS with 0.05% NaN <sub>3</sub> and 40% Glycerol,pH7.4

## Applications Recommended Dilution

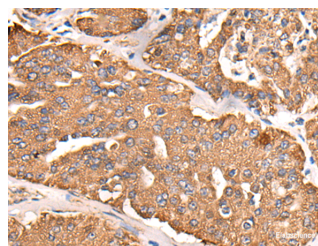
<b>WB</b>	1:1000-1:5000
<b>IHC</b>	1:40-1:200
<b>ELISA</b>	1:5000-1:10000

## Data



Western blot analysis of Human heart tissue A549  
231 Jurkat HEPG2 and Hela cell lysates using  
ATP5C1 Polyclonal Antibody at dilution of 1:1000

**Observed Mw:Refer to figures**  
**Calculated Mw:33 kDa**



Immunohistochemistry of paraffin-embedded  
Human liver cancer tissue using ATP5C1 Polyclonal  
Antibody at dilution of 1:55(×200)

## Preparation & Storage

**Storage** Store at -20°C. Avoid freeze / thaw cycles.

## Background

ATP5C1(ATP synthase subunit gamma,mitochondrial) is also named as ATP5C,ATP5CL1 and belongs to the ATPase gamma chain family. Some scientists reported the complete sequence of the gene for the human ATP synthase gamma subunit and described tissue-specific isoforms of the subunit generated by alternative splicing of exon 9. The liver (L) isoform differed from the heart (H) isoform by the addition of a single amino acid (asp273) at the C terminus. .

## For Research Use Only

A Reliable Research Partner in Life Science and Medicine

Toll-free: 1-888-852-8623

Web: [www.elabscience.com](http://www.elabscience.com)

Tel: 1-832-243-6086

Email: [techsupport@elabscience.com](mailto:techsupport@elabscience.com)

Fax: 1-832-243-6017