

CASP9 Polyclonal Antibody

Catalog No. E-AB-30762

Note: Centrifuge before opening to ensure complete recovery of vial contents.

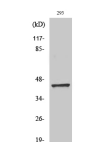
Description

Reactivity	Human
Immunogen	Synthesized peptide derived from human Caspase-9 around the non-phosphorylation site of Ser196.
Host	Rabbit
Isotype	IgG
Purification	Affinity purification
Conjugation	Unconjugated
Buffer	PBS with 0.02% sodium azide, 0.5% protective protein and 50% glycerol, pH7.4

Applications Recommended Dilution

WB	1:500-1:2000
IHC	1:100-1:300
IF	1:200-1:1000
ELISA	1:20000

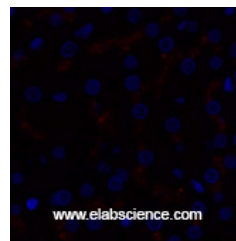
Data



www.elabscience.com

Western Blot analysis of 293T cells using CASP9 Polyclonal Antibody at dilution of 1:2000.

Observed Mw:50kDa
Calculated Mw:46kDa



www.elabscience.com

Immunofluorescence analysis of Human liver tissue using CASP9 Polyclonal Antibody at dilution of 1:200.

Preparation & Storage

Storage Store at -20°C. Avoid freeze / thaw cycles.

Background

Involved in the activation cascade of caspases responsible for apoptosis execution. Binding of caspase-9 to Apaf-1 leads to activation of the protease which then cleaves and activates caspase-3. Proteolytically cleaves poly(ADP-ribose) polymerase (PARP). Isoform 2 lacks activity is an dominant-negative inhibitor of caspase-9.

For Research Use Only