

C3orf38 Polyclonal Antibody

Catalog No. E-AB-52504

Note: Centrifuge before opening to ensure complete recovery of vial contents.

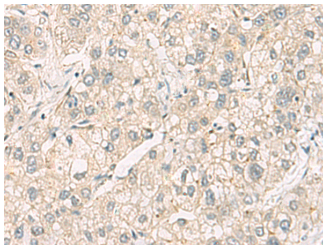
Description

Reactivity	Human, Mouse, Rat
Immunogen	Fusion protein of human C3orf38
Host	Rabbit
Isotype	IgG
Purification	Antigen affinity purification
Conjugation	Unconjugated
Buffer	PBS with 0.05% NaN ₃ and 40% Glycerol, pH7.4

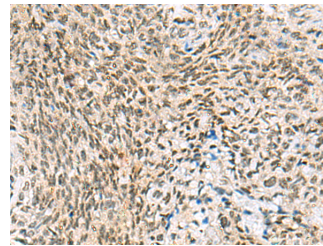
Applications Recommended Dilution

IHC 1:100-1:200

Data



Immunohistochemistry of paraffin-embedded Human liver cancer tissue using C3orf38 Polyclonal Antibody at dilution of 1:95 (x200)



Immunohistochemistry of paraffin-embedded Human cervical cancer tissue using C3orf38 Polyclonal Antibody at dilution of 1:95 (x200)

Preparation & Storage

Storage Store at -20°C. Avoid freeze / thaw cycles.

Background

May be involved in apoptosis regulation.

For Research Use Only