

# CALHM1 Polyclonal Antibody

Catalog Number:E-AB-52511

**Note:** Centrifuge before opening to ensure complete recovery of vial contents.

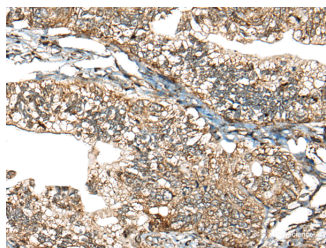
## Description

<b>Reactivity</b>	Human, Mouse
<b>Immunogen</b>	Fusion protein of human CALHM1
<b>Host</b>	Rabbit
<b>Isotype</b>	IgG
<b>Purification</b>	Antigen affinity purification
<b>Conjugation</b>	Unconjugated
<b>Formulation</b>	PBS with 0.05% NaN <sub>3</sub> and 40% Glycerol,pH7.4

## Applications Recommended Dilution

<b>IHC</b>	1:30-1:150
<b>ELISA</b>	1:5000-1:10000

## Data



Immunohistochemistry of paraffin-embedded Human gastric cancer tissue using CALHM1 Polyclonal Antibody at dilution of 1:40(×200)

## Preparation & Storage

**Storage** Store at -20°C. Avoid freeze / thaw cycles.

## Background

CALHM1 (Calcium Homeostasis Modulator 1) is a Protein Coding gene. Diseases associated with CALHM1 include Alzheimer Disease. Among its related pathways are Taste transduction. GO annotations related to this gene include identical protein binding and voltage-gated ion channel activity. An important paralog of this gene is CALHM3. This gene encodes a calcium channel that plays a role in processing of amyloid-beta precursor protein. A polymorphism at this locus has been reported to be associated with susceptibility to late-onset Alzheimer's disease in some populations, but the pathogenicity of this polymorphism is unclear.

## For Research Use Only

A Reliable Research Partner in Life Science and Medicine

Toll-free: 1-888-852-8623

Web: [www.elabscience.com](http://www.elabscience.com)

Tel: 1-832-243-6086

Email: [techsupport@elabscience.com](mailto:techsupport@elabscience.com)

Fax: 1-832-243-6017