

CAMKK1 Polyclonal Antibody

Catalog No. E-AB-52514

Note: Centrifuge before opening to ensure complete recovery of vial contents.

Description

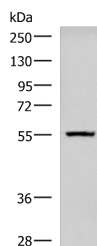
Reactivity	Human, Mouse, Rat
Immunogen	Fusion protein of human CAMKK1
Host	Rabbit
Isotype	IgG
Purification	Antigen affinity purification
Conjugation	Unconjugated
Buffer	PBS with 0.05% NaN ₃ and 40% Glycerol,pH7.4

Applications

Recommended Dilution

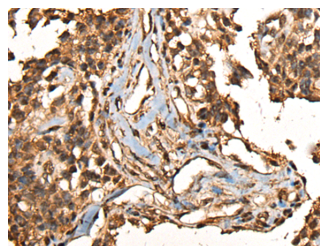
WB	1:500-1:2000
IHC	1:30-1:150

Data

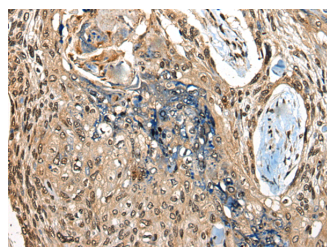


Western blot analysis of Human cerebella tissue lysate using CAMKK1 Polyclonal Antibody at dilution of 1:700

Observed Mw:Refer to figures
Calculated Mw:56 kDa



Immunohistochemistry of paraffin-embedded Human ovarian cancer tissue using CAMKK1 Polyclonal Antibody at dilution of 1:35(×200)



Immunohistochemistry of paraffin-embedded Human esophagus cancer tissue using CAMKK1 Polyclonal Antibody at dilution of 1:35(×200)

Preparation & Storage

For Research Use Only

Storage Store at -20°C. Avoid freeze / thaw cycles.

Background

The product of this gene belongs to the Serine/Threonine protein kinase family, and to the Ca(2+)/calmodulin-dependent protein kinase subfamily. This protein plays a role in the calcium/calmodulin-dependent (CaM) kinase cascade. Three transcript variants encoding two distinct isoforms have been identified for this gene.