

CCDC12 Polyclonal Antibody

Catalog No. E-AB-52522

Note: Centrifuge before opening to ensure complete recovery of vial contents.

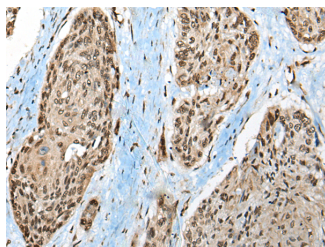
Description

Reactivity	Human, Mouse
Immunogen	Full length fusion protein
Host	Rabbit
Isotype	IgG
Purification	Antigen affinity purification
Conjugation	Unconjugated
Buffer	PBS with 0.05% NaN ₃ and 40% Glycerol, pH7.4

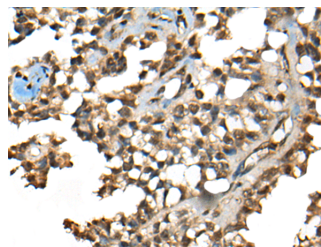
Applications Recommended Dilution

IHC	1:50-1:300
------------	------------

Data



Immunohistochemistry of paraffin-embedded Human esophagus cancer tissue using CCDC12 Polyclonal Antibody at dilution of 1:50 (x200)



Immunohistochemistry of paraffin-embedded Human ovarian cancer tissue using CCDC12 Polyclonal Antibody at dilution of 1:50 (x200)

Preparation & Storage

Storage Store at -20°C. Avoid freeze / thaw cycles.

Background

CCDC12, also known as FLJ39430, FLJ40801 or MGC23918, is a 166 amino acid protein encoded by a gene mapping to human chromosome 3. Chromosome 3 is made up of about 214 million bases encoding over 1,100 genes. Notably, there is a chemokine receptor gene cluster and a variety of human cancer related loci on chromosome 3. Particular regions of the chromosome 3 short arm are deleted in many types of cancer cells. Key tumor suppressing genes on chromosome 3 encode apoptosis mediator RASSF1, cell migration regulator HYAL1 and angiogenesis suppressor SEMA3B. Marfan Syndrome, porphyria, von Hippel-Lindau syndrome, osteogenesis imperfecta and Charcot-Marie-Tooth Disease are a few of the numerous genetic diseases associated with chromosome 3.

For Research Use Only