

Catenin beta Polyclonal Antibody

Catalog No. E-AB-30767

Note: Centrifuge before opening to ensure complete recovery of vial contents.

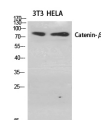
Description

Reactivity	Human, Mouse, Rat, Monkey
Immunogen	Synthesized peptide derived from human Catenin- β around the non-phosphorylation site of Ser33.
Host	Rabbit
Isotype	IgG
Purification	Affinity purification
Conjugation	Unconjugated
Buffer	PBS with 0.02% sodium azide, 0.5% BSA and 50% glycerol, pH7.4

Applications Recommended Dilution

WB 1:500-1:2000,
IHC 1:100-1:300, IF
1:200-1:1000, ELISA
1:20000

Data



www.elabscience.com

Western Blot analysis of 3T3, HeLa cells using Catenin beta Polyclonal Antibody at dilution of 1:2000.

Observed Mw:85kDa
Calculated Mw:85kDa

Preparation & Storage

Storage Store at -20°C. Avoid freeze / thaw cycles.

Background

Key downstream component of the canonical Wnt signaling pathway. In the absence of Wnt, forms a complex with AXIN1, AXIN2, APC, CSNK1A1 and GSK3B that promotes phosphorylation on N-terminal Ser and Thr residues and ubiquitination of CTNNB1 via BTRC and its subsequent degradation by the proteasome. In the presence of Wnt ligand, CTNNB1 is not ubiquitinated and accumulates in the nucleus, where it acts as a coactivator for transcription factors of the TCF/LEF family, leading to activate Wnt responsive genes. Involved in the regulation of cell adhesion. The majority of beta-catenin is localized to the cell membrane and is part of E-cadherin/catenin adhesion complexes which are proposed to couple cadherins to the actin cytoskeleton.

For Research Use Only