

## PITPNB Polyclonal Antibody

Catalog No. E-AB-52589

**Note:** Centrifuge before opening to ensure complete recovery of vial contents.

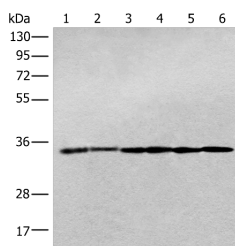
### Description

<b>Reactivity</b>	Human, Mouse, Rat
<b>Immunogen</b>	Fusion protein of human PITPNB
<b>Host</b>	Rabbit
<b>Isotype</b>	IgG
<b>Purification</b>	Antigen affinity purification
<b>Conjugation</b>	Unconjugated
<b>Buffer</b>	PBS with 0.05% NaN <sub>3</sub> and 40% Glycerol, pH7.4

### Applications Recommended Dilution

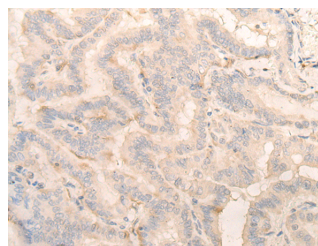
<b>WB</b>	1:500-1:2000
<b>IHC</b>	1:30-1:150

### Data



Western blot analysis of Jurkat cell Human breast cancer tissue Hela cell Human fetal brain tissue Human cerebrum tissue Rat brain tissue lysates using PITPNB Polyclonal Antibody at dilution of 1:400

**Observed Mw: Refer to figures**  
**Calculated Mw: 32 kDa**



Immunohistochemistry of paraffin-embedded Human thyroid cancer tissue using PITPNB Polyclonal Antibody at dilution of 1:25 (×200)

### Preparation & Storage

**Storage** Store at -20°C. Avoid freeze / thaw cycles.

### Background

This gene encodes a cytoplasmic protein that catalyzes the transfer of phosphatidylinositol and phosphatidylcholine between membranes. This transfer activity is required for COPI complex-mediated retrograde transport from the Golgi apparatus to the endoplasmic reticulum. Alternative splicing of this gene results in multiple transcript variants.

### For Research Use Only