

Cathepsin D Polyclonal Antibody

Catalog No. E-AB-30774

Note: Centrifuge before opening to ensure complete recovery of vial contents.

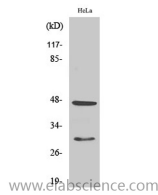
Description

| | |
|---------------------|---|
| Reactivity | Human |
| Immunogen | Synthesized peptide derived from the Internal region of human Cathepsin D. |
| Host | Rabbit |
| Isotype | IgG |
| Purification | Affinity purification |
| Buffer | PBS with 0.02% sodium azide, 0.5% protective protein and 50% glycerol pH 7.4. |

Applications Recommended Dilution

| | |
|--------------|--------------|
| WB | 1:500-1:2000 |
| IHC | 1:100-1:300 |
| ELISA | 1:40000 |

Data



Western Blot analysis of HeLa cells with Cathepsin D
Polyclonal Antibody
Observed Mw:46,30kDa
Calculated Mw:45kDa

Preparation & Storage

Storage Store at -20°C. Avoid freeze / thaw cycles.

Background

Acid protease active in intracellular protein breakdown. Involved in the pathogenesis of several diseases such as breast cancer and possibly Alzheimer disease.

For Research Use Only