

PLGLB2 Polyclonal Antibody

Catalog No. E-AB-52674

Note: Centrifuge before opening to ensure complete recovery of vial contents.

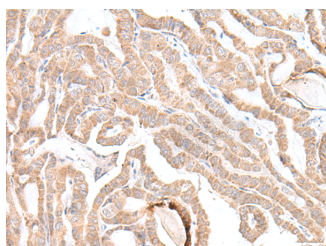
Description

Reactivity	Human
Immunogen	Fusion protein of human PLGLB2
Host	Rabbit
Isotype	IgG
Purification	Antigen affinity purification
Conjugation	Unconjugated
Buffer	PBS with 0.05% NaN ₃ and 40% Glycerol,pH7.4

Applications Recommended Dilution

IHC	1:30-1:150
------------	------------

Data



Immunohistochemistry of paraffin-embedded Human thyroid cancer tissue using PLGLB2 Polyclonal Antibody at dilution of 1:35(×200)

Preparation & Storage

Storage Store at -20°C. Avoid freeze / thaw cycles.

Background

Cleavage of the serine proteinase plasminogen to form plasmin is the central event in the dissolution of blood clots by the fibrinolytic system. Within the fibrinolytic cascade, the serine proteinases urokinase-type plasminogen activator (uPA) and tissue-type plasminogen activator (tPA) activate the proenzyme plasminogen by cleaving plasminogen to form the fibrinolytically active enzyme plasmin. PLGLB2 (plasminogen-like B2), also known as PLGP1, is a 96 amino acid protein that resembles the N-terminal plasminogen activation peptide, which is released from plasminogen during conversion to plasmin. PLGLB2 may bind to lysine binding sites present in the kringle structures of plasminogen, an event that interferes with the binding of fibrin or α -2 antiplasmin to plasminogen and may result in the localization of activity at sites necessary for extracellular matrix destruction.

For Research Use Only