

CREBBP Polyclonal Antibody

Catalog No. E-AB-30785

Note: Centrifuge before opening to ensure complete recovery of vial contents.

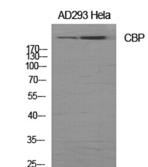
Description

Reactivity	Human,Mouse,Rat
Immunogen	Synthesized peptide derived from human CBP around the non-acetylation site of K1535
Host	Rabbit
Isotype	IgG
Purification	Affinity purification
Conjugation	Unconjugated
Buffer	PBS with 0.02% sodium azide, 0.5% protective protein and 50% glycerol, pH7.4

Applications Recommended Dilution

WB	1:500-1:2000
IHC	1:100-1:300
IF	1:200-1:1000
ELISA	1:20000

Data



www.elabscience.com

Western Blot analysis of AD293, HeLa cells using CREBBP Polyclonal Antibody at dilution of 1:1000.

Observed Mw:265kDa
Calculated Mw:265kDa

Preparation & Storage

Storage Store at -20°C. Avoid freeze / thaw cycles.

Background

Acetylates histones, giving a specific tag for transcriptional activation. Also acetylates non-histone proteins, like NCOA3 coactivator. Binds specifically to phosphorylated CREB and enhances its transcriptional activity toward cAMP-responsive genes. Acts as a coactivator of ALX1 in the presence of EP300.

For Research Use Only