

NCBP2 Polyclonal Antibody

Catalog No. E-AB-30788

Note: Centrifuge before opening to ensure complete recovery of vial contents.

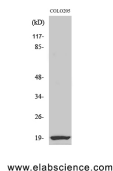
Description

Reactivity	Human, Mouse
Immunogen	Synthesized peptide derived from the N-terminal region of human CBP20
Host	Rabbit
Isotype	IgG
Purification	Affinity purification
Conjugation	Unconjugated
Buffer	PBS with 0.02% sodium azide, 0.5% protective protein and 50% glycerol, pH7.4

Applications Recommended Dilution

WB	1:500-1:2000
IHC	1:100-1:300
IF	1:200-1:1000
ELISA	1:5000

Data



www.elabscience.com

Western Blot analysis of COLO205 cells with NCBP2
Polyclonal Antibody
Observed Mw:18kDa
Calculated Mw:18kDa

Preparation & Storage

Storage Store at -20°C. Avoid freeze / thaw cycles.

Background

NCBP2 is a component of the nuclear cap-binding protein complex (CBC), which binds to the monomethylated 5' cap of nascent pre-mRNA in the nucleoplasm. It has an RNP domain commonly found in RNA binding proteins, and contains the cap-binding activity.

For Research Use Only