

FLOT2 Polyclonal Antibody

Catalog No. E-AB-52735

Note: Centrifuge before opening to ensure complete recovery of vial contents.

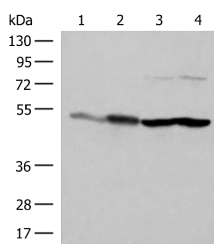
Description

Reactivity	Human, Mouse, Rat
Immunogen	Fusion protein of human FLOT2
Host	Rabbit
Isotype	IgG
Purification	Antigen affinity purification
Conjugation	Unconjugated
Buffer	PBS with 0.05% NaN ₃ and 40% Glycerol, pH7.4

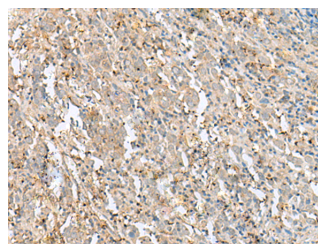
Applications Recommended Dilution

WB	1:500-1:2000
IHC	1:40-1:200

Data



Western blot analysis of Mouse brain tissue HepG2
A375 Hela cell lysates using FLOT2 Polyclonal
Antibody at dilution of 1:350
Observed Mw: Refer to figures
Calculated Mw: 47 kDa



Immunohistochemistry of paraffin-embedded
Human cervical cancer tissue using FLOT2
Polyclonal Antibody at dilution of 1:50(×200)

Preparation & Storage

Storage Store at -20°C. Avoid freeze / thaw cycles.

Background

Caveolae are small domains on the inner cell membrane involved in vesicular trafficking and signal transduction. This gene encodes a caveolae-associated, integral membrane protein, which is thought to function in neuronal signaling.

For Research Use Only