

FLOT2 Polyclonal Antibody

Catalog Number:E-AB-52735



Note: Centrifuge before opening to ensure complete recovery of vial contents.

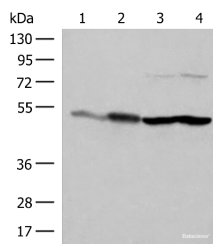
Description

Reactivity	Human, Mouse, Rat
Immunogen	Fusion protein of human FLOT2
Host	Rabbit
Isotype	IgG
Purification	Antigen affinity purification
Conjugation	Unconjugated
Formulation	PBS with 0.05% NaN3 and 40% Glycerol,pH7.4

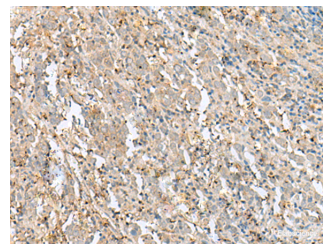
Applications Recommended Dilution

WB	1:500-1:2000
IHC	1:40-1:200
ELISA	1:5000-1:10000

Data



Western blot analysis of Mouse brain tissue HepG2 A375 Hela cell lysates using FLOT2 Polyclonal Antibody at dilution of 1:350
Observed Mw:Refer to figures
Calculated Mw:47 kDa



Immunohistochemistry of paraffin-embedded Human cervical cancer tissue using FLOT2 Polyclonal Antibody at dilution of 1:50(×200)

Preparation & Storage

Storage Store at -20°C. Avoid freeze / thaw cycles.

Background

Caveolae are small domains on the inner cell membrane involved in vesicular trafficking and signal transduction. This gene encodes a caveolae-associated, integral membrane protein, which is thought to function in neuronal signaling.

For Research Use Only

A Reliable Research Partner in Life Science and Medicine

Toll-free: 1-888-852-8623

Web: www.elabscience.com

Tel: 1-832-243-6086

Email: techsupport@elabscience.com

Fax: 1-832-243-6017