

## TLE6 Polyclonal Antibody

Catalog No. E-AB-52751

**Note:** Centrifuge before opening to ensure complete recovery of vial contents.

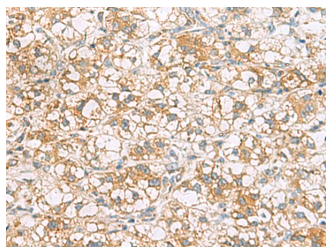
### Description

|                     |                                                        |
|---------------------|--------------------------------------------------------|
| <b>Reactivity</b>   | Human                                                  |
| <b>Immunogen</b>    | Fusion protein of human TLE6                           |
| <b>Host</b>         | Rabbit                                                 |
| <b>Isotype</b>      | IgG                                                    |
| <b>Purification</b> | Antigen affinity purification                          |
| <b>Conjugation</b>  | Unconjugated                                           |
| <b>Buffer</b>       | PBS with 0.05% NaN <sub>3</sub> and 40% Glycerol,pH7.4 |

### Applications Recommended Dilution

**IHC** 1:50-1:200

### Data



Immunohistochemistry of paraffin-embedded Human liver cancer tissue using TLE6 Polyclonal Antibody at dilution of 1:75(×200)

### Preparation & Storage

**Storage** Store at -20°C. Avoid freeze / thaw cycles.

### Background

This gene encodes a member of the Groucho/ transducin-like Enhancer of split family of transcriptional co-repressors. The encoded protein is a component of the mammalian subcortical maternal complex, which is required for preimplantation development. In mouse, knock out of this gene results in cleavage-stage embryonic arrest resulting from defective cytoplasmic F-actin meshwork formation and asymmetric cell division. In human, an allelic variant in this gene is associated with preimplantation embryonic lethality. Alternative splicing results in multiple transcript variants.

### For Research Use Only