

ABLIM3 Polyclonal Antibody

Catalog Number:E-AB-52758



Note: Centrifuge before opening to ensure complete recovery of vial contents.

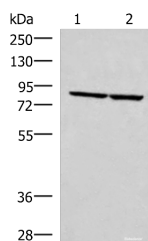
Description

Reactivity	Human, Mouse, Rat
Immunogen	Fusion protein of human ABLIM3
Host	Rabbit
Isotype	IgG
Purification	Antigen affinity purification
Conjugation	Unconjugated
Formulation	PBS with 0.05% NaN ₃ and 40% Glycerol,pH7.4

Applications Recommended Dilution

WB	1:500-1:2000
ELISA	1:5000-1:10000

Data



Western blot analysis of PC3 and NIH/3T3 cell lysates
using ABLIM3 Polyclonal Antibody at dilution of
1:400

Observed Mw:Refer to figures
Calculated Mw:78 kDa

Preparation & Storage

Storage Store at -20°C. Avoid freeze / thaw cycles.

Background

This gene encodes a member of the actin-binding LIM (abLIM) family of proteins. These proteins are characterized by an N-terminal LIM domain and a C-terminal dematin-like domain. The encoded protein interacts with actin filaments and may be a component of adherens junctions in several cell types. A variant of this gene may be associated with pain sensitivity in male human patients.

For Research Use Only

A Reliable Research Partner in Life Science and Medicine

Toll-free: 1-888-852-8623

Web: www.elabscience.com

Tel: 1-832-243-6086

Email: techsupport@elabscience.com

Fax: 1-832-243-6017