

## PDIA4 Polyclonal Antibody

**Catalog No.** E-AB-52766

*Note:* Centrifuge before opening to ensure complete recovery of vial contents.

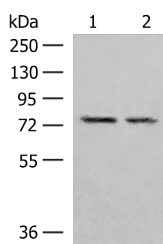
### Description

<b>Reactivity</b>	Human, Mouse, Rat
<b>Immunogen</b>	Fusion protein of human PDIA4
<b>Host</b>	Rabbit
<b>Isotype</b>	IgG
<b>Purification</b>	Antigen affinity purification
<b>Conjugation</b>	Unconjugated
<b>Buffer</b>	PBS with 0.05% NaN <sub>3</sub> and 40% Glycerol, pH7.4

### Applications Recommended Dilution

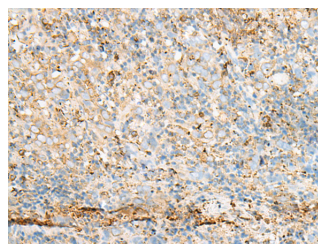
<b>WB</b>	1:500-1:2000
<b>IHC</b>	1:30-1:150

### Data

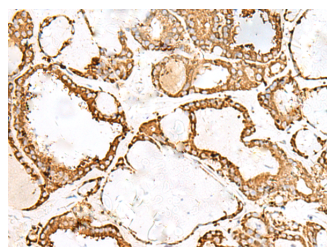


Western blot analysis of NIH/3T3 and RAW264.7 cell lysates using PDIA4 Polyclonal Antibody at dilution of 1:300

**Observed Mw: Refer to figures**  
**Calculated Mw: 73 kDa**



Immunohistochemistry of paraffin-embedded Human cervical cancer tissue using PDIA4 Polyclonal Antibody at dilution of 1:50 (×200)



Immunohistochemistry of paraffin-embedded Human thyroid cancer tissue using PDIA4 Polyclonal Antibody at dilution of 1:50 (×200)

### Preparation & Storage

#### For Research Use Only

**Storage** Store at -20°C. Avoid freeze / thaw cycles.

## Background

PDIA4(Protein disulfide-isomerase A4) is also named as ERP70,ERP72 and belongs to the protein disulfide isomerase family. It catalyzes the rearrangement of -S-S- bonds in proteins. ERp72 is a soluble protein localized in the ER lumen and contains the COOH-terminal retention signal,KEEL. There are 6 cysteine residues in the amino acid sequences of mouse and human ERp72. All of the cysteine residues occur in the internal thioredoxin motif,CGHC. The full length protein has a signal peptide with 20 amino acid.