

CCDC45 Polyclonal Antibody

Catalog No. E-AB-30793

Note: Centrifuge before opening to ensure complete recovery of vial contents.

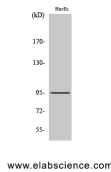
Description

Reactivity	Human,Mouse,Rat
Immunogen	Synthesized peptide derived from the Internal region of human CCDC45
Host	Rabbit
Isotype	IgG
Purification	Affinity purification
Conjugation	Unconjugated
Buffer	PBS with 0.02% sodium azide, 0.5% protective protein and 50% glycerol, pH7.4

Applications Recommended Dilution

WB	1:500-1:2000
ELISA	1:40000

Data



Western Blot analysis of HuvEc cells with CCDC45
Polyclonal Antibody.
Observed Mw:95kDa
Calculated Mw:95kDa

Preparation & Storage

Storage Store at -20°C. Avoid freeze / thaw cycles.

Background

CEP95 (Centrosomal Protein 95) is a Protein Coding gene.

For Research Use Only