

CCDC99 Polyclonal Antibody

Catalog No. E-AB-30794

Note: Centrifuge before opening to ensure complete recovery of vial contents.

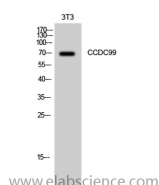
Description

Reactivity	Human
Immunogen	Synthesized peptide derived from the C-terminal region of human CCDC99
Host	Rabbit
Isotype	IgG
Purification	Affinity purification
Buffer	PBS with 0.02% sodium azide, 0.5% protective protein and 50% glycerol pH 7.4.

Applications Recommended Dilution

WB	1:500-1:2000
ELISA	1:40000

Data



Western Blot analysis of 3T3 cells using CCDC99
Polyclonal Antibody at dilution of 1:1000.

Observed Mw:70kDa
Calculated Mw:70kDa

Preparation & Storage

Storage Store at -20°C. Avoid freeze / thaw cycles.

Background

Required for the localization of dynein and dynactin to the mitotic kintochore. Dynein is believed to control the initial lateral interaction between the kinetochore and spindle microtubules and to facilitate the subsequent formation of end-on kinetochore-microtubule attachments mediated by the NDC80 complex. Also required for correct spindle orientation. Does not appear to be required for the removal of spindle assembly checkpoint (SAC) proteins from the kinetochore upon bipolar spindle attachment. Interacts with KNTC1 and ZW10. These interactions appear weak and may be transient or indirect.

For Research Use Only