

CCRL1 Polyclonal Antibody

Catalog No. E-AB-30797

Note: Centrifuge before opening to ensure complete recovery of vial contents.

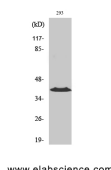
Description

Reactivity	Human,Mouse
Immunogen	Synthesized peptide derived from the N-terminal region of human CCRL1
Host	Rabbit
Isotype	IgG
Purification	Affinity purification
Conjugation	Unconjugated
Buffer	PBS with 0.02% sodium azide, 0.5% protective protein and 50% glycerol, pH7.4

Applications Recommended Dilution

WB	1:500-1:2000
IF	1:100-1:300
ELISA	1:5000

Data



www.elabscience.com

Western Blot analysis of 293 cells using CCRL1 Polyclonal Antibody at dilution of 1:1000.

Observed Mw:40kDa
Calculated Mw:40kDa

Preparation & Storage

Storage Store at -20°C. Avoid freeze / thaw cycles.

Background

The protein encoded by this gene is a member of the G protein-coupled receptor family, and is a receptor for C-C type chemokines. This receptor has been shown to bind dendritic cell- and T cell-activated chemokines including CCL19/ELC, CCL21/SLC, and CCL25/TECK. A pseudogene of this gene is found on chromosome 6. Alternatively spliced transcript variants encoding the same protein have been described. ACKR4 (Atypical Chemokine Receptor 4) is a Protein Coding gene. Among its related pathways are Peptide ligand-binding receptors and Chemokine Superfamily Pathway: Human/Mouse Ligand-Receptor Interactions. GO annotations related to this gene include G-protein coupled receptor activity and chemokine receptor activity. An important paralog of this gene is CCR7.

For Research Use Only