

LYZL1 Polyclonal Antibody

Catalog Number:E-AB-52843

Note: Centrifuge before opening to ensure complete recovery of vial contents.

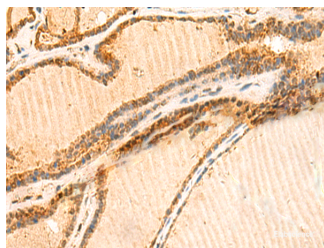
Description

Reactivity	Human, Mouse
Immunogen	Fusion protein of human LYZL1
Host	Rabbit
Isotype	IgG
Purification	Antigen affinity purification
Conjugation	Unconjugated
Formulation	PBS with 0.05% NaN ₃ and 40% Glycerol,pH7.4

Applications Recommended Dilution

IHC	1:50-1:300
ELISA	1:5000-1:10000

Data



Immunohistochemistry of paraffin-embedded Human thyroid cancer tissue using LYZL1 Polyclonal Antibody at dilution of 1:50(×200)

Preparation & Storage

Storage Store at -20°C. Avoid freeze / thaw cycles.

Background

The lysozyme family of proteins has an important role in host defense and is associated with the monocyte-macrophage system and enhances the activity of immunoagents. The mammalian lysozyme gene family is much larger than previously appreciated and consists of at least eight distinct genes scattered around the genome. C-type lysozymes are specifically involved catalyzing the hydrolysis of Beta-1,4 glycosidic bonds of the peptidoglycan of bacterial cell walls. As a homolog of human C-type lysozyme, LYZL1 is an intra-acrosomal, nonbacteriolytic, c lysozyme-like protein recently isolated from human spermatozoa.

For Research Use Only

A Reliable Research Partner in Life Science and Medicine

Toll-free: 1-888-852-8623

Web: www.elabscience.com

Tel: 1-832-243-6086

Email: techsupport@elabscience.com

Fax: 1-832-243-6017