

RTN1 Polyclonal Antibody

Catalog No. E-AB-52846

Note: Centrifuge before opening to ensure complete recovery of vial contents.

Description

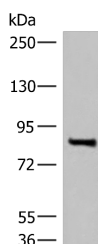
Reactivity	Human, Mouse, Rat
Immunogen	Fusion protein of human RTN1
Host	Rabbit
Isotype	IgG
Purification	Antigen affinity purification
Conjugation	Unconjugated
Buffer	PBS with 0.05% NaN ₃ and 40% Glycerol,pH7.4

Applications

Recommended Dilution

WB 1:500-1:2000,
ELISA
1:5000-1:10000

Data



Western blot analysis of Mouse brain tissue lysate using RTN1 Polyclonal Antibody at dilution of 1:400

Observed Mw:Refer to figures
Calculated Mw:84 kDa

Preparation & Storage

Storage Store at -20°C. Avoid freeze / thaw cycles.

Background

This gene belongs to the family of reticulon encoding genes. Reticulons are associated with the endoplasmic reticulum, and are involved in neuroendocrine secretion or in membrane trafficking in neuroendocrine cells. This gene is considered to be a specific marker for neurological diseases and cancer, and is a potential molecular target for therapy. Alternative splicing results in multiple transcript variants.

For Research Use Only