

SEC22B Polyclonal Antibody

Catalog No. E-AB-52853

Note: Centrifuge before opening to ensure complete recovery of vial contents.

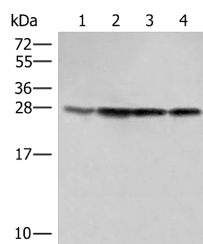
Description

Reactivity	Human, Mouse, Rat
Immunogen	Fusion protein of human SEC22B
Host	Rabbit
Isotype	IgG
Purification	Antigen affinity purification
Conjugation	Unconjugated
Buffer	PBS with 0.05% NaN ₃ and 40% Glycerol, pH7.4

Applications Recommended Dilution

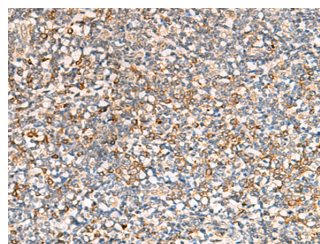
WB	1:500-1:2000
IHC	1:50-1:300

Data

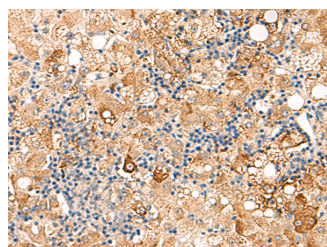


Western blot analysis of 231 Hela LOVO and A172 cell lysates using SEC22B Polyclonal Antibody at dilution of 1:500

Observed Mw: Refer to figures
Calculated Mw: 25 kDa



Immunohistochemistry of paraffin-embedded Human tonsil tissue using SEC22B Polyclonal Antibody at dilution of 1:70 (x200)



Immunohistochemistry of paraffin-embedded Human liver cancer tissue using SEC22B Polyclonal Antibody at dilution of 1:70 (x200)

Preparation & Storage

For Research Use Only

Storage Store at -20°C. Avoid freeze / thaw cycles.

Background

The protein encoded by this gene is a member of the SEC22 family of vesicle trafficking proteins. It seems to complex with SNARE and it is thought to play a role in the ER-Golgi protein trafficking. This protein has strong similarity to Mus musculus and Cricetulus griseus proteins. SEC22B (SEC22 Homolog B, Vesicle Trafficking Protein (Gene/Pseudogene)) is a Protein Coding gene. Among its related pathways are Transport to the Golgi and subsequent modification and Innate Immune System. GO annotations related to this gene include syntaxin binding. An important paralog of this gene is SEC22A.