

CD108 Polyclonal Antibody

Catalog No. E-AB-30800

Note: Centrifuge before opening to ensure complete recovery of vial contents.

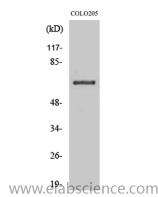
Description

Reactivity	Human,Mouse,Rat
Immunogen	Synthesized peptide derived from the Internal region of human CD108
Host	Rabbit
Isotype	IgG
Purification	Affinity purification
Buffer	PBS with 0.02% sodium azide,0.5% protective protein and 50% glycerol pH 7.4.

Applications Recommended Dilution

WB	1:500-1:2000
ELISA	1:5000

Data



Western Blot analysis of COLO205 cells with CD108
Polyclonal Antibody.
Observed Mw:75kDa
Calculated Mw:75kDa

Preparation & Storage

Storage Store at -20°C. Avoid freeze / thaw cycles.

Background

The protein encoded by this gene binds to cell surfaces through a glycosylphosphatidylinositol (GPI) linkage. The encoded glycoprotein is found on activated lymphocytes and erythrocytes. This protein may be involved in immunomodulatory and neuronal processes. Defects in this gene can result in loss of bone mineral density (BMD). Three transcript variants encoding different isoforms have been found for this gene.

For Research Use Only