

# NEGR1 Polyclonal Antibody

Catalog Number:E-AB-52861

**Note:** Centrifuge before opening to ensure complete recovery of vial contents.

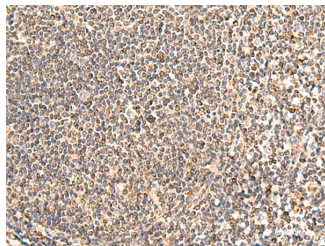
## Description

<b>Reactivity</b>	Human, Mouse, Rat
<b>Immunogen</b>	Fusion protein of human NEGR1
<b>Host</b>	Rabbit
<b>Isotype</b>	IgG
<b>Purification</b>	Antigen affinity purification
<b>Conjugation</b>	Unconjugated
<b>Formulation</b>	PBS with 0.05% NaN <sub>3</sub> and 40% Glycerol,pH7.4

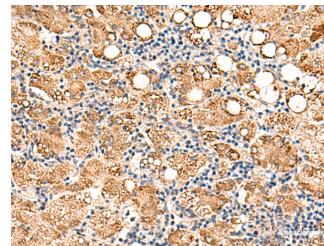
## Applications Recommended Dilution

<b>IHC</b>	1:50-1:300
<b>ELISA</b>	1:5000-1:10000

## Data



Immunohistochemistry of paraffin-embedded Human tonsil tissue using NEGR1 Polyclonal Antibody at dilution of 1:50(×200)



Immunohistochemistry of paraffin-embedded Human gastric cancer tissue using NEGR1 Polyclonal Antibody at dilution of 1:50(×200)

## Preparation & Storage

**Storage** Store at -20°C. Avoid freeze / thaw cycles.

## Background

NEGR1 (Neuronal Growth Regulator 1) is a Protein Coding gene. Diseases associated with NEGR1 include Podoconiosis. Among its related pathways are Post-translational modification- synthesis of GPI-anchored proteins and Metabolism of proteins. An important paralog of this gene is LSAMP.

## For Research Use Only

A Reliable Research Partner in Life Science and Medicine

Toll-free: 1-888-852-8623

Web: [www.elabscience.com](http://www.elabscience.com)

Tel: 1-832-243-6086

Email: [techsupport@elabscience.com](mailto:techsupport@elabscience.com)

Fax: 1-832-243-6017