

## CD116 Polyclonal Antibody

Catalog No. E-AB-30801

**Note:** Centrifuge before opening to ensure complete recovery of vial contents.

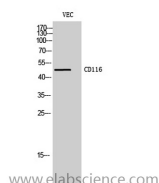
### Description

<b>Reactivity</b>	Human
<b>Immunogen</b>	Synthesized peptide derived from the Internal region of human CD116.
<b>Host</b>	Rabbit
<b>Isotype</b>	IgG
<b>Purification</b>	Affinity purification
<b>Buffer</b>	PBS with 0.02% sodium azide, 0.5% protective protein and 50% glycerol pH 7.4.

### Applications Recommended Dilution

<b>WB</b>	1:500-1:2000
<b>ELISA</b>	1:20000

### Data



Western Blot analysis of VEC cells using CD116 Polyclonal Antibody at dilution of 1:2000.

**Observed Mw:46kDa**  
**Calculated Mw:46kDa**

### Preparation & Storage

**Storage** Store at -20°C. Avoid freeze / thaw cycles.

### Background

The protein encoded by this gene is the alpha subunit of the heterodimeric receptor for colony stimulating factor 2, a cytokine which controls the production, differentiation, and function of granulocytes and macrophages. The encoded protein is a member of the cytokine family of receptors. This gene is found in the pseudoautosomal region (PAR) of the X and Y chromosomes. Multiple transcript variants encoding different isoforms have been found for this gene, with some of the isoforms being membrane-bound and others being soluble.

### For Research Use Only