

## RETREG1 Polyclonal Antibody

**Catalog No.** E-AB-52883

*Note:* Centrifuge before opening to ensure complete recovery of vial contents.

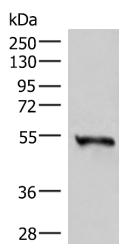
### Description

<b>Reactivity</b>	Human, Mouse, Rat
<b>Immunogen</b>	Fusion protein of human RETREG1
<b>Host</b>	Rabbit
<b>Isotype</b>	IgG
<b>Purification</b>	Antigen affinity purification
<b>Conjugation</b>	Unconjugated
<b>Buffer</b>	PBS with 0.05% NaN <sub>3</sub> and 40% Glycerol,pH7.4

### Applications Recommended Dilution

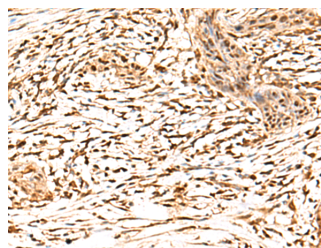
<b>WB</b>	1:500-1:2000
<b>IHC</b>	1:50-1:300

### Data

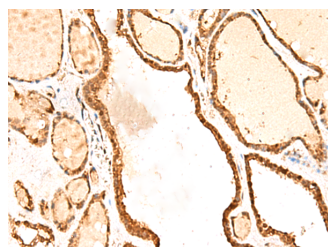


Western blot analysis of Human heart tissue lysate using RETREG1 Polyclonal Antibody at dilution of 1:300

**Observed Mw:Refer to figures**  
**Calculated Mw:55 kDa**



Immunohistochemistry of paraffin-embedded Human esophagus cancer tissue using RETREG1 Polyclonal Antibody at dilution of 1:50(×200)



Immunohistochemistry of paraffin-embedded Human thyroid cancer tissue using RETREG1 Polyclonal Antibody at dilution of 1:50(×200)

### Preparation & Storage

#### For Research Use Only

**Storage**                      Store at -20°C. Avoid freeze / thaw cycles.

## Background

The protein encoded by this gene is a cis-Golgi transmembrane protein that may be necessary for the long-term survival of nociceptive and autonomic ganglion neurons. Mutations in this gene are a cause of hereditary sensory and autonomic neuropathy type IIB (HSAN IIB), and this gene may also play a role in susceptibility to vascular dementia. Alternatively spliced transcript variants encoding multiple isoforms have been observed for this gene.