

MEST Polyclonal Antibody

Catalog No. E-AB-52898

Note: Centrifuge before opening to ensure complete recovery of vial contents.

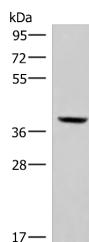
Description

Reactivity	Human, Mouse, Rat
Immunogen	Fusion protein of human MEST
Host	Rabbit
Isotype	IgG
Purification	Antigen affinity purification
Conjugation	Unconjugated
Buffer	PBS with 0.05% NaN ₃ and 40% Glycerol, pH7.4

Applications Recommended Dilution

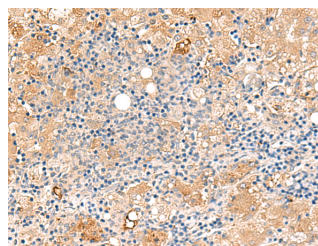
WB	1:500-1:2000
IHC	1:50-1:300

Data

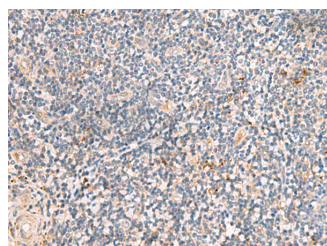


Western blot analysis of Mouse kidney tissue lysate using MEST Polyclonal Antibody at dilution of 1:350

Observed Mw: Refer to figures
Calculated Mw: 39 kDa



Immunohistochemistry of paraffin-embedded Human liver cancer tissue using MEST Polyclonal Antibody at dilution of 1:50 (x200)



Immunohistochemistry of paraffin-embedded Human tonsil tissue using MEST Polyclonal Antibody at dilution of 1:50 (x200)

Preparation & Storage

Storage Store at -20°C. Avoid freeze / thaw cycles.

For Research Use Only

Background

MEST (Mesoderm-specific transcript homolog protein) is also named as PEG1 and belongs to the AB hydrolase superfamily. The gene is a imprinting gene, which is associated with growth of mesodermal origin cells and plays important roles in embryo development. It is also a novel regulator of Wnt/CTNNB signalling during adipogenic differentiation. It has 3 isoforms produced by alternative splicing and the full length protein has a glycosylation site.