

## HMGCLL1 Polyclonal Antibody

**Catalog No.** E-AB-52900

*Note:* Centrifuge before opening to ensure complete recovery of vial contents.

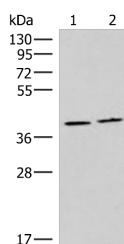
### Description

|                     |   |
|---------------------|---|
| <b>Reactivity</b>   | Human, Mouse, Rat                                       |
| <b>Immunogen</b>    | Fusion protein of human HMGCLL1                         |
| <b>Host</b>         | Rabbit  |
| <b>Isotype</b>      | IgG   |
| <b>Purification</b> | Antigen affinity purification                           |
| <b>Conjugation</b>  | Unconjugated  |
| <b>Buffer</b>       | PBS with 0.05% NaN <sub>3</sub> and 40% Glycerol, pH7.4 |

### Applications Recommended Dilution

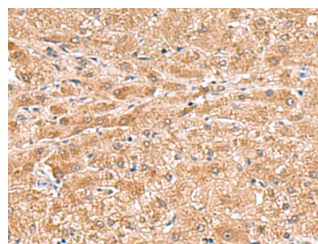
|            |               |
|------------|---------------|
| <b>WB</b>  | 1:1000-1:5000 |
| <b>IHC</b> | 1:50-1:300    |

### Data

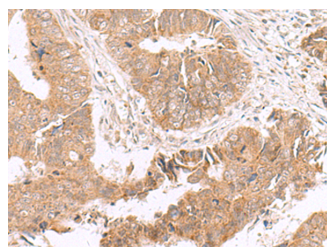


Western blot analysis of Human placenta tissue and Human fetal brain tissue lysates using HMGCLL1 Polyclonal Antibody at dilution of 1:1000

**Observed Mw: Refer to figures**  
**Calculated Mw: 40 kDa**



Immunohistochemistry of paraffin-embedded Human liver cancer tissue using HMGCLL1 Polyclonal Antibody at dilution of 1:70(×200)



Immunohistochemistry of paraffin-embedded Human colorectal cancer tissue using HMGCLL1 Polyclonal Antibody at dilution of 1:70(×200)

### Preparation & Storage

#### For Research Use Only

**Storage** Store at -20°C. Avoid freeze / thaw cycles.

## Background

Non-mitochondrial 3-hydroxymethyl-3-methylglutaryl-CoA lyase that catalyzes a cation-dependent cleavage of (S)-3-hydroxy-3-methylglutaryl-CoA into acetyl-CoA and acetoacetate, a key step in ketogenesis, the products of which support energy production in nonhepatic animal tissues.