

## CD172b Polyclonal Antibody

Catalog No. E-AB-30807

**Note:** Centrifuge before opening to ensure complete recovery of vial contents.

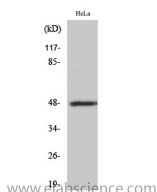
### Description

<b>Reactivity</b>	Human
<b>Immunogen</b>	Synthesized peptide derived from the Internal region of human CD172b
<b>Host</b>	Rabbit
<b>Isotype</b>	IgG
<b>Purification</b>	Affinity purification
<b>Buffer</b>	PBS with 0.02% sodium azide, 0.5% protective protein and 50% glycerol pH 7.4.

### Applications Recommended Dilution

<b>WB</b>	1:500-1:2000
<b>ELISA</b>	1:5000

### Data



Western Blot analysis of HeLa cells with CD172b  
Polyclonal Antibody.  
**Observed Mw:48kDa**  
**Calculated Mw:43kDa**

### Preparation & Storage

**Storage** Store at -20°C. Avoid freeze / thaw cycles.

### Background

The protein encoded by this gene is a member of the signal-regulatory-protein (SIRP) family, and also belongs to the immunoglobulin superfamily. SIRP family members are receptor-type transmembrane glycoproteins known to be involved in the negative regulation of receptor tyrosine kinase-coupled signaling processes. This protein was found to interact with TYROBP/DAP12, a protein bearing immunoreceptor tyrosine-based activation motifs. This protein was also reported to participate in the recruitment of tyrosine kinase SYK. Multiple transcript variants encoding different isoforms have been found for this gene. SIRPB1 (Signal Regulatory Protein Beta 1) is a Protein Coding gene. Diseases associated with SIRPB1 include Composite Lymphoma. Among its related pathways are Cell junction organization and Innate Immune System. An important paralog of this gene is SIRPA.

### For Research Use Only