

CD19 Polyclonal Antibody

Catalog No. E-AB-30809

Note: Centrifuge before opening to ensure complete recovery of vial contents.

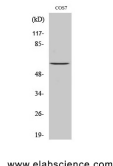
Description

Reactivity	Human, Mouse, Monkey
Immunogen	Synthesized peptide derived from human CD19 around the non-phosphorylation site of Tyr531.
Host	Rabbit
Isotype	IgG
Purification	Affinity purification
Conjugation	Unconjugated
Buffer	PBS with 0.02% sodium azide, 0.5% BSA and 50% glycerol, pH7.4

Applications Recommended Dilution

**WB 1:500-1:2000, IF
1:50-1:200, ELISA
1:20000**

Data



Western Blot analysis of COS7 cells with CD19
Polyclonal Antibody.
Observed Mw:61kDa
Calculated Mw:61kDa

Preparation & Storage

Storage Store at -20°C. Avoid freeze / thaw cycles.

Background

Lymphocytes proliferate and differentiate in response to various concentrations of different antigens. The ability of the B cell to respond in a specific, yet sensitive manner to the various antigens is achieved with the use of low-affinity antigen receptors. This gene encodes a cell surface molecule which assembles with the antigen receptor of B lymphocytes in order to decrease the threshold for antigen receptor-dependent stimulation.

For Research Use Only