

CD20 Polyclonal Antibody

Catalog No. E-AB-30811

Note: Centrifuge before opening to ensure complete recovery of vial contents.

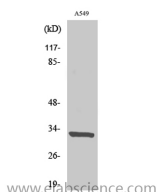
Description

Reactivity	Human
Immunogen	Synthesized peptide derived from the C-terminal region of human CD20.
Host	Rabbit
Isotype	IgG
Purification	Affinity purification
Buffer	PBS with 0.02% sodium azide, 0.5% protective protein and 50% glycerol pH 7.4.

Applications Recommended Dilution

WB	1:500-1:2000
ELISA	1:40000

Data



Western Blot analysis of A549 cells with CD20
Polyclonal Antibody.
Observed Mw:33kDa
Calculated Mw:33kDa

Preparation & Storage

Storage Store at -20°C. Avoid freeze / thaw cycles.

Background

This gene encodes a member of the membrane-spanning 4A gene family. Members of this nascent protein family are characterized by common structural features and similar intron/exon splice boundaries and display unique expression patterns among hematopoietic cells and nonlymphoid tissues. This gene encodes a B-lymphocyte surface molecule which plays a role in the development and differentiation of B-cells into plasma cells. This family member is localized to 11q12, among a cluster of family members. Alternative splicing of this gene results in two transcript variants which encode the same protein.

For Research Use Only