

CD205 Polyclonal Antibody

Catalog No. E-AB-30812

Note: Centrifuge before opening to ensure complete recovery of vial contents.

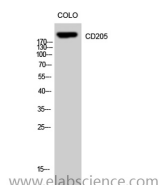
Description

Reactivity	Human
Immunogen	Synthesized peptide derived from the Internal region of human CD205.
Host	Rabbit
Isotype	IgG
Purification	Affinity purification
Buffer	PBS with 0.02% sodium azide, 0.5% protective protein and 50% glycerol pH 7.4.

Applications Recommended Dilution

WB	1:500-1:2000
ELISA	1:40000

Data



Western Blot analysis of COLO cells with CD205
Polyclonal Antibody.
Observed Mw:200kDa
Calculated Mw:198kDa

Preparation & Storage

Storage Store at -20°C. Avoid freeze / thaw cycles.

Background

Lymphocyte antigen 75 is a protein that in humans is encoded by the LY75 gene. To direct captured antigens from the extracellular space to a specialized antigen-processing compartment as an endocytic receptor. Causes reduced proliferation of B-lymphocytes. Selection splicing results in multiple transcript variants encoding fusion products that share sequence identity with each individual gene product.

For Research Use Only