

RPS6KA5 Polyclonal Antibody

Catalog Number:E-AB-52987



Note: Centrifuge before opening to ensure complete recovery of vial contents.

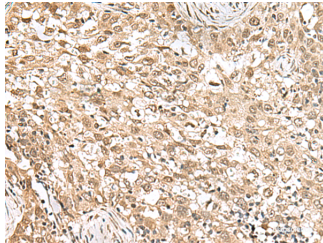
Description

Reactivity	Human
Immunogen	Fusion protein of human RPS6KA5
Host	Rabbit
Isotype	IgG
Purification	Antigen affinity purification
Conjugation	Unconjugated
Formulation	PBS with 0.05% NaN ₃ and 40% Glycerol,pH7.4

Applications Recommended Dilution

IHC	1:150-1:300
ELISA	1:5000-1:10000

Data



Immunohistochemistry of paraffin-embedded Human esophagus cancer tissue using RPS6KA5 Polyclonal Antibody at dilution of 1:160(×200)

Preparation & Storage

Storage Store at -20°C. Avoid freeze / thaw cycles.

Background

RPS6KA5 (Ribosomal Protein S6 Kinase A5) is a Protein Coding gene. Among its related pathways are ERK Signaling and L1CAM interactions. Gene Ontology (GO) annotations related to this gene include transferase activity, transferring phosphorus-containing groups and protein tyrosine kinase activity. An important paralog of this gene is RPS6KA4.

For Research Use Only

A Reliable Research Partner in Life Science and Medicine

Toll-free: 1-888-852-8623

Web: www.elabscience.com

Tel: 1-832-243-6086

Email: techsupport@elabscience.com

Fax: 1-832-243-6017