

GSTCD Polyclonal Antibody

Catalog Number:E-AB-52996



Note: Centrifuge before opening to ensure complete recovery of vial contents.

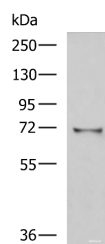
Description

Reactivity	Human, Mouse
Immunogen	Fusion protein of human GSTCD
Host	Rabbit
Isotype	IgG
Purification	Antigen affinity purification
Conjugation	Unconjugated
Formulation	PBS with 0.05% NaN3 and 40% Glycerol,pH7.4

Applications Recommended Dilution

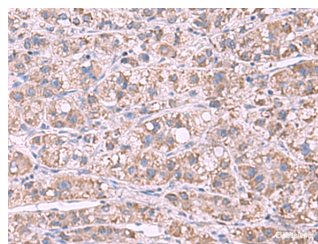
WB	1:500-1:2000
IHC	1:70-1:350
ELISA	1:5000-1:10000

Data



Western blot analysis of Mouse kidney tissue lysate using GSTCD Polyclonal Antibody at dilution of 1:1000

Observed Mw:Refer to figures
Calculated Mw:71 kDa



Immunohistochemistry of paraffin-embedded Human liver cancer tissue using GSTCD Polyclonal Antibody at dilution of 1:70(×200)

Preparation & Storage

Storage Store at -20°C. Avoid freeze / thaw cycles.

Background

GSTCD (Glutathione S-Transferase C-Terminal Domain Containing) is a Protein Coding gene. Among its related pathways are Cytochrome P450 - arranged by substrate type. Gene Ontology (GO) annotations related to this gene include methyltransferase activity and rRNA methyltransferase activity.

For Research Use Only

A Reliable Research Partner in Life Science and Medicine

Toll-free: 1-888-852-8623

Web: www.elabscience.com

Tel: 1-832-243-6086

Email: techsupport@elabscience.com

Fax: 1-832-243-6017