

CD284 Polyclonal Antibody

Catalog No. E-AB-30816

Note: Centrifuge before opening to ensure complete recovery of vial contents.

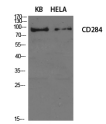
Description

Reactivity	Human, Mouse
Immunogen	Synthesized peptide derived from the Internal region of human CD284.
Host	Rabbit
Isotype	IgG
Purification	Affinity purification
Conjugation	Unconjugated
Buffer	PBS with 0.02% sodium azide, 0.5% protective protein and 50% glycerol, pH7.4

Applications Recommended Dilution

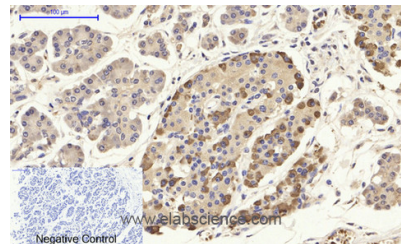
WB	1:500-1:2000
IHC	1:100-1:300
IF	1:50-1:200

Data

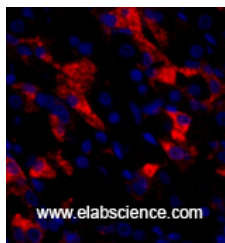


www.elabscience.com

Western Blot analysis of KB, Hela cells using CD284 Polyclonal Antibody at dilution of 1:1000.
Observed Mw:95kDa
Calculated Mw:96kDa



Immunohistochemistry of paraffin-embedded Human stomach cancer tissue using CD284 Polyclonal Antibody at dilution of 1:200.



Immunofluorescence analysis of Human stomach tissue using CD284 Polyclonal Antibody at dilution of 1:200.

Preparation & Storage

For Research Use Only

Storage Store at -20°C. Avoid freeze / thaw cycles.

Background

The protein encoded by this gene is a member of the Toll-like receptor (TLR) family which plays a fundamental role in pathogen recognition and activation of innate immunity. TLRs are highly conserved from *Drosophila* to humans and share structural and functional similarities. They recognize pathogen-associated molecular patterns that are expressed on infectious agents, and mediate the production of cytokines necessary for the development of effective immunity. The various TLRs exhibit different patterns of expression. This receptor has been implicated in signal transduction events induced by lipopolysaccharide (LPS) found in most gram-negative bacteria. Mutations in this gene have been associated with differences in LPS responsiveness. Multiple transcript variants encoding different isoforms have been found for this gene.

For Research Use Only