

## PCBD1 Polyclonal Antibody

Catalog No. E-AB-53015

**Note:** Centrifuge before opening to ensure complete recovery of vial contents.

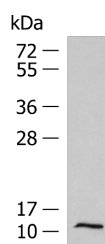
### Description

<b>Reactivity</b>	Human, Mouse, Rat
<b>Immunogen</b>	Fusion protein of human PCBD1
<b>Host</b>	Rabbit
<b>Isotype</b>	IgG
<b>Purification</b>	Antigen affinity purification
<b>Conjugation</b>	Unconjugated
<b>Buffer</b>	PBS with 0.05% NaN <sub>3</sub> and 40% Glycerol, pH7.4

### Applications Recommended Dilution

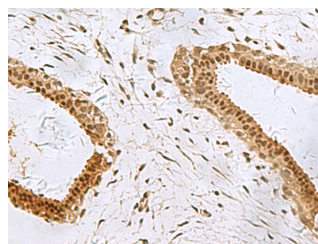
<b>WB</b>	1:500-1:2000
<b>IHC</b>	1:80-1:400

### Data

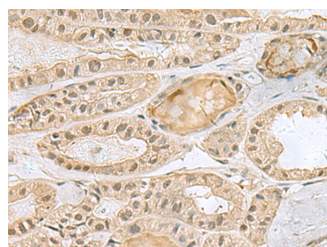


Western blot analysis of Human fetal liver tissue lysate using PCBD1 Polyclonal Antibody at dilution of 1:1000

**Observed Mw: Refer to figures**  
**Calculated Mw: 12 kDa**



Immunohistochemistry of paraffin-embedded Human breast cancer tissue using PCBD1 Polyclonal Antibody at dilution of 1:90 (x200)



Immunohistochemistry of paraffin-embedded Human thyroid cancer tissue using PCBD1 Polyclonal Antibody at dilution of 1:90 (x200)

### Preparation & Storage

#### For Research Use Only

**Storage** Store at -20°C. Avoid freeze / thaw cycles.

## Background

This gene encodes a member of the pterin-4-alpha-carbinolamine dehydratase family. The encoded protein has been identified as a moonlighting protein based on its ability to perform mechanistically distinct functions. The encoded protein functions as both a dehydratase involved in tetrahydrobiopterin biosynthesis, and as a cofactor for HNF1A-dependent transcription. A deficiency of this enzyme leads to hyperphenylalaninemia. Alternative splicing results in multiple transcript variants.