

CD2BP2 Polyclonal Antibody

Catalog No. E-AB-30818

Note: Centrifuge before opening to ensure complete recovery of vial contents.

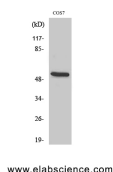
Description

Reactivity	Human,Monkey
Immunogen	Synthesized peptide derived from the Internal region of human CD2BP2
Host	Rabbit
Isotype	IgG
Purification	Affinity purification
Conjugation	Unconjugated
Buffer	PBS with 0.02% sodium azide, 0.5% protective protein and 50% glycerol, pH7.4

Applications Recommended Dilution

WB	1:500-1:2000
IHC	1:100-1:300
ELISA	1:40000

Data



Western Blot analysis of COS7 cells using CD2BP2 Polyclonal Antibody at dilution of 1:1000.

Observed Mw:50kDa
Calculated Mw:38kDa

Preparation & Storage

Storage Store at -20°C. Avoid freeze / thaw cycles.

Background

This gene encodes a bi-functional protein. In the cytoplasm, the encoded protein binds the cytoplasmic tail of human surface antigen CD2 via its C-terminal GYF domain, and regulate CD2-triggered T lymphocyte activation. In the nucleus, this protein is a component of the U5 small nuclear ribonucleoprotein complex and is involved in RNA splicing. A pseudogene has been identified on chromosome 7. Alternative splicing results in multiple transcript variants but their biological validity has not been determined. CD2BP2 (CD2 Cytoplasmic Tail Binding Protein 2) is a Protein Coding gene. Among its related pathways are mRNA Splicing - Major Pathway and Gene Expression. GO annotations related to this gene include ribonucleoprotein complex binding.

For Research Use Only